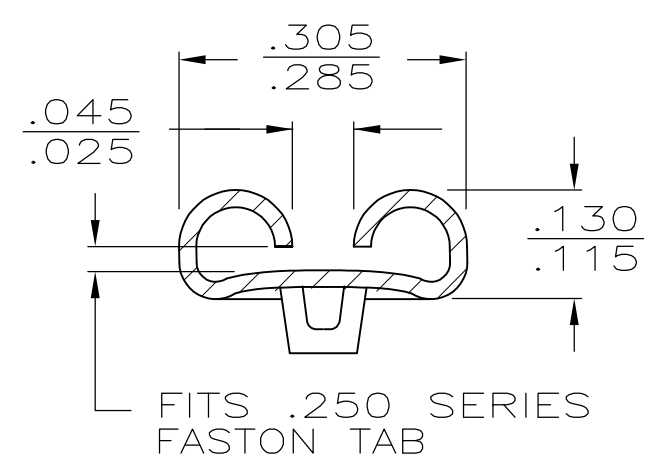
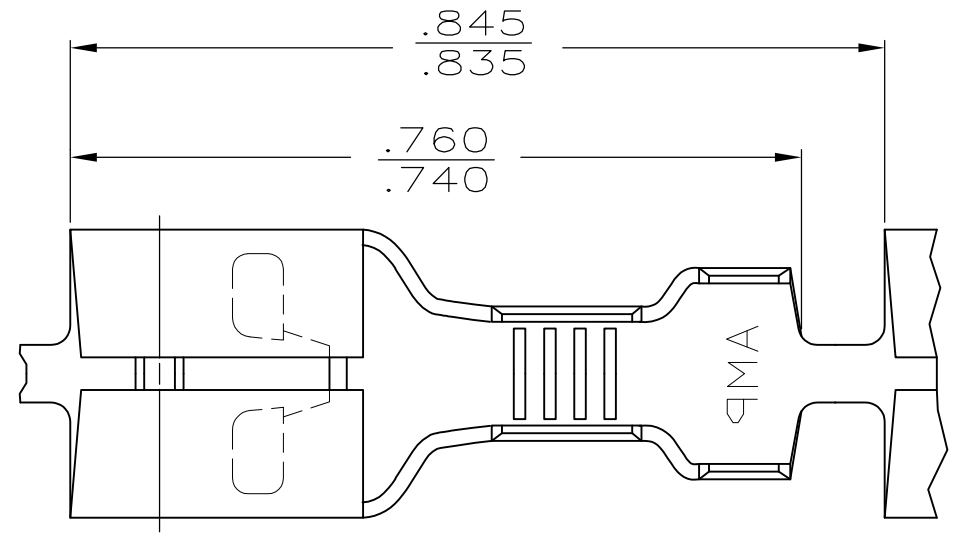


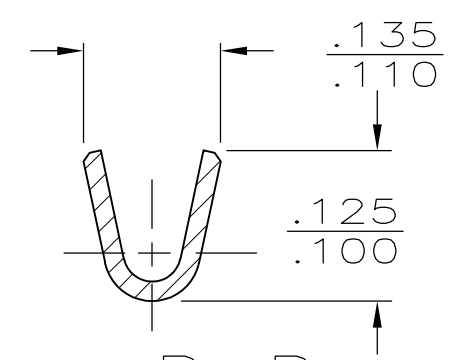
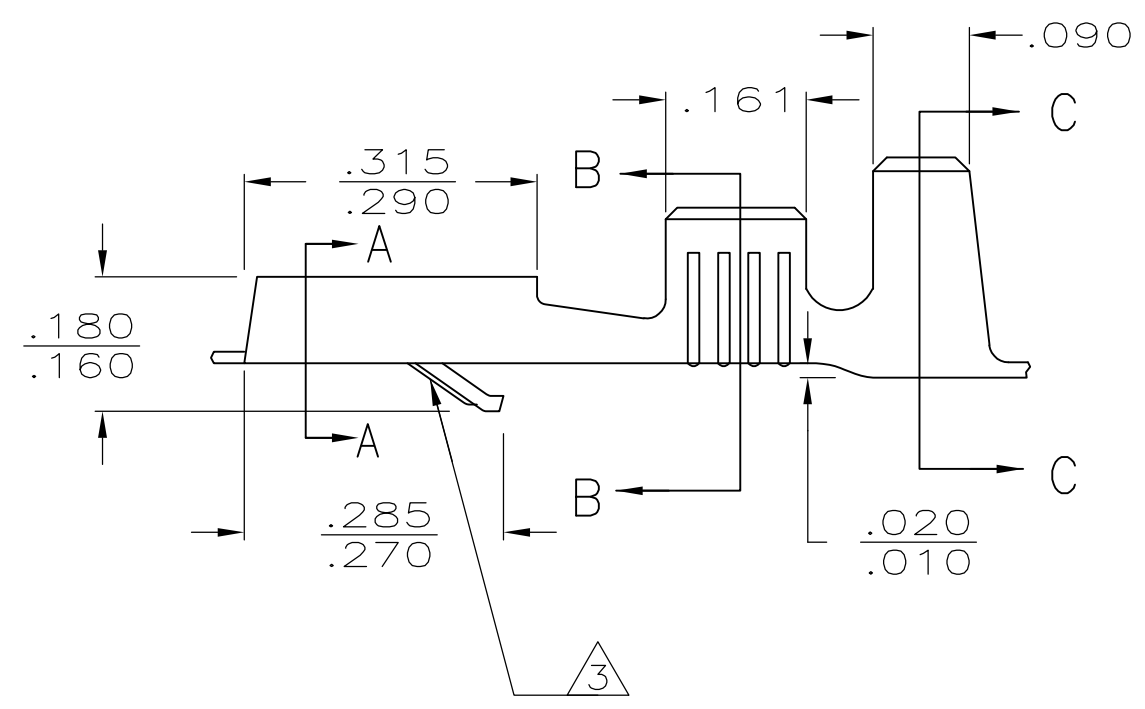
THIS DRAWING IS UNPUBLISHED. RELEASED FOR PUBLICATION
 © COPYRIGHT - By - ALL RIGHTS RESERVED.

LOC	DIST	REVISIONS			
P	LTR	DESCRIPTION	DATE	DWN	APVD
AF	50	AJ	REVISED PER ECR-13-005733	26AUG2013	KH PD

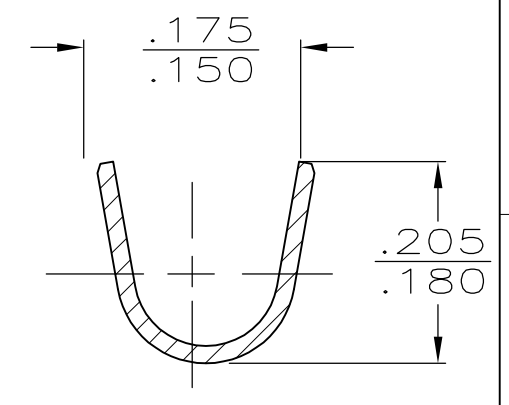


- 1 CONTINUOUS STRIP ON REELS.
- 2 FOREIGN PRODUCTION ONLY
- 3 LANCE IN 1-60295-2 ONLY.
- 4 INTERLEAVING PAPER
- 5 PRELIMINARY - NOT FOR PRODUCTION

SECTION A-A



SECTION B-B



SECTION C-C

FINISH	INSULATION RANGE	WIRE SIZE	TAB THK	PART NO
4 TIN	.085-.125	22-18	.032 ±.001	5 60295-4
3 TIN	.085-.125	22-18	.032 ±.001	2 1-60295-2
OBSOLETE NICKEL	.085-.125	22-18	.032 ±.001	60295-3
TIN	.085-.125	22-18	.032 ±.001	60295-2
-	.085-.125	22-18	.032 ±.001	60295-1

THIS DRAWING IS A CONTROLLED DOCUMENT.		DWN JR RUTH 4/28/86	TE Connectivity .250 SERIES FASTIN - FASTON RECEPTACLE				
DIMENSIONS: INCHES		CHK G YETTER 4/28/86				NAME	RESTRICTED TO
TOLERANCES UNLESS OTHERWISE SPECIFIED:		APVD R KUZO 4/28/86				PRODUCT SPEC	
0 PLC ± - 1 PLC ± - 2 PLC ± - 3 PLC ± .015 4 PLC ± - ANGLES ± -		APPLICATION SPEC				SIZE	CAGE CODE
MATERIAL BRASS	FINISH SEE ABOVE	WEIGHT -	A3	00779	DRAWING NO C-60295		
CUSTOMER DRAWING			SCALE 1:1	SHEET 1 OF 1	REV AJ		